

LAUREA

# LbD in Project Working

Päivi Marjanen and Aila Muhonen



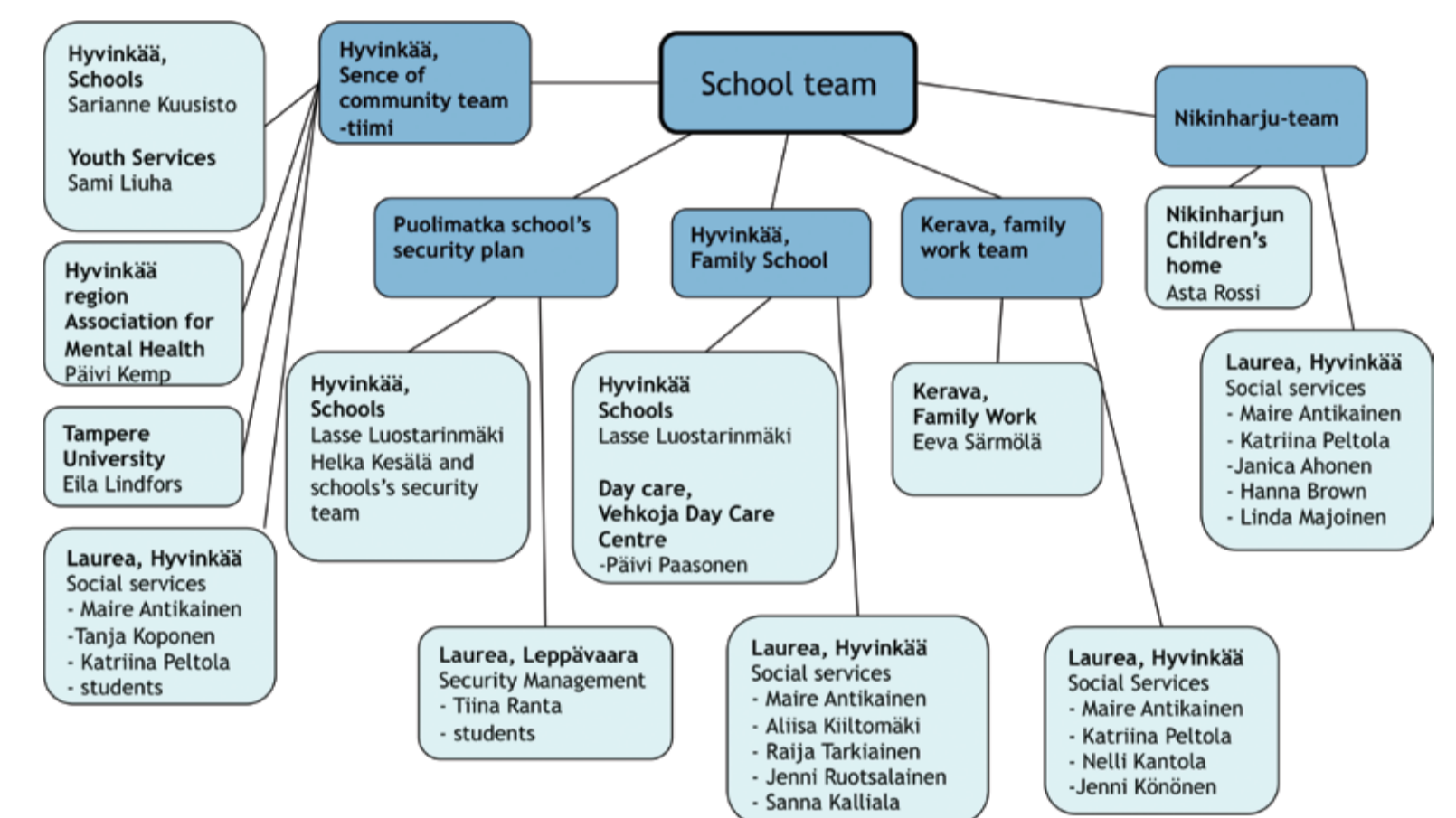
## Good Every Day Life for Children and Adolescents –Project

This poster presents Lbd-model in concrete teaching process. Good everyday life for children is a project of the European Social Fund. The aims of the project:

The main objective is to make the University of Applied Sciences more relevant to the world of work. During the project many lecturers and students from different fields of study as well as representatives from work organisations try to solve challenges that arise from the every day working life. The aim is that the students can network and face challenges of the every day life and find solutions to them.

### The Participants

The project will be implemented with the financial support from European Social Fund and State Provincial Office of Southern Finland. The main participants in the projects are Laurea University of Applied Sciences, University of Tampere and The Centre of Expertise on Social Welfare. The project operates mainly in the Central and Northern Uusimaa region.



## LbD-model in Concrete Teaching

Company representatives, students and lecturers get together to monthly development meetings to

- share information concerning the project
- increase and improve cooperation between participants
- foster the chosen development themes
- share good practises

A good example of learning by developing method is the fostering the well-being of children and family. This theme includes:

- lectures
- visits to the work places
- work shops and
- monthly development meetings

The aims and contents of the curriculum will be dealt during the lectures. During the visits in the work places the students have interviewed customers and employers and identified the current challenges. The main challenges are increasing physical activities in the day care, activate the every day life in children's homes and improving the communication using different senses and improving the sense of community among school children.

The themes of the work shops arise from the students' needs. The monthly development teams are a part of the learning process.



## Challenges of Every Day Life

The development themes arise from the every day situations in the working life.

### The themes in early childhood education include for example:

- an advisory model for a healthy meal for 6 years old children
- a heart friendly diet for 4 and 5 years old children
- importance of peer support to the parents of small children
- children and media from the perspective of parents and children

### The themes related to school include for example:

- motivating the school drop outs to go back to school, increasing the sense of community and early prevention of difficulties at school
- lectures for the parents at school and kindergarten in order to support responsible parenthood and parents' resources
- school's security plan

### Results

The tools and methods in the series of pictures were developed during the pilot stage of the project. Due to the high interest, the development process of the most product innovations are still continuing in the form of the students' thesis. The aim is to develop products that support children's development and learning.